



A GAME CHANGER IN ENDOSCOPIC ULTRASOUND-GUIDED BIOPSY

BETTER BIOPSIES FOR ENHANCED PRECISION MEDICINE

SUMMER 2021

ASSAF KLEIN, CEO
CARL RICKENBAUGH, CHAIRMAN OF THE BOARD



DISCLAIMER

IMPORTANT NOTICE

This presentation has been prepared by Limaca Medical Ltd. (the “Company”) solely for informational purposes. The information contained herein has been prepared to assist prospective investors in making their own evaluation of the Company and does not purport to be complete or to contain all of the information a prospective or existing investor may desire. In all cases, interested parties should conduct their own investigation and analysis of the company and the data set forth in this information. The Company has prepared this presentation based on information available to it, including information derived from public sources that have not been independently verified. The Company makes no representation or warranty as to the accuracy or completeness of this information and shall not have any liability for any representations (expressed or implied) regarding information contained in, or for any errors or omissions in, this presentation.

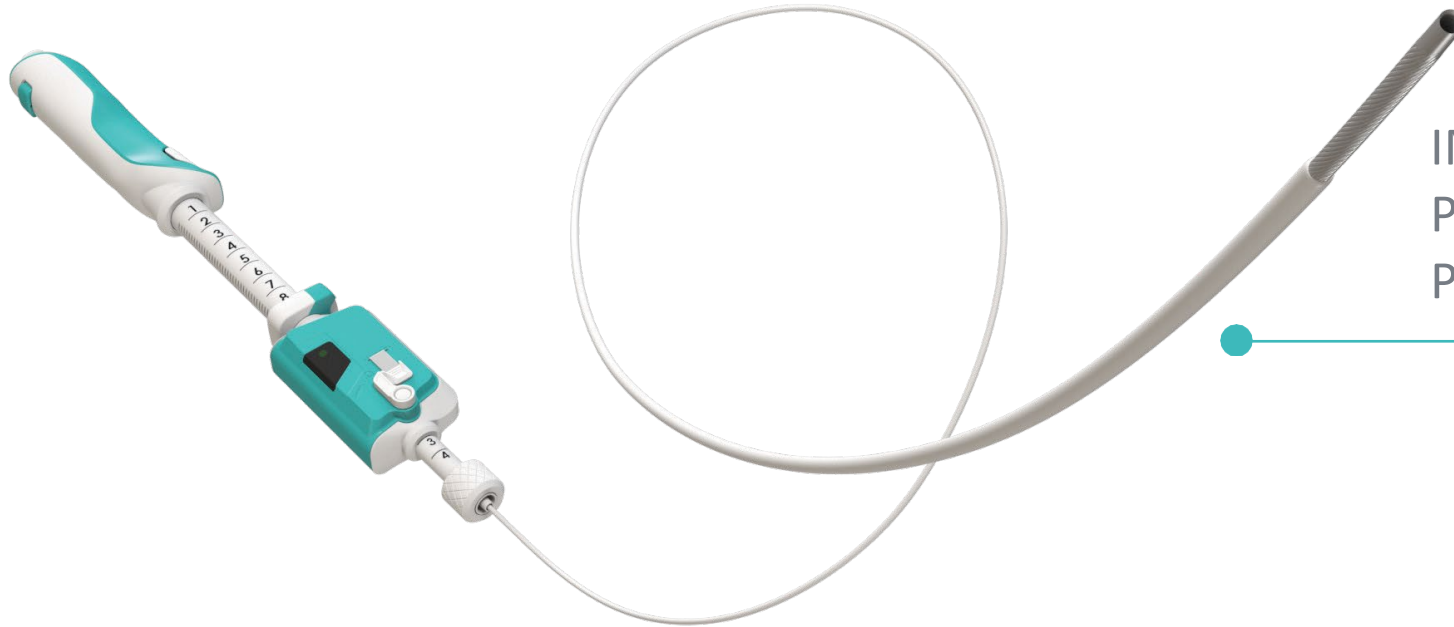
This presentation includes certain statements and estimates provided by the company with respect to the projected future performance of the Company. Such statements, estimates and projections reflect various assumptions by management concerning possible anticipated results, which assumptions may or may not be correct. No representations are made as to the accuracy of such statements, estimates or projections. This presentation may contain statements that are not historical facts, referred to as “forward looking statements.” The Company’s actual future results may differ materially from those suggested by such statements. No assurance can be given that future events will occur or that projections will be achieved. Past performance is not a reliable indication of future performance. This presentation is not, and nothing in it should be construed as, an offer, invitation or recommendation in respect of the Company’s securities, or an offer to sell, or a solicitation

of an offer to buy, the Company’s securities in any jurisdiction. Neither this presentation nor anything in it shall form the basis of any contract or commitment. Prospective investors should not construe the contents of this presentation as business, legal, tax, investment or other advice. Each prospective investor should make his, her or its own inquiries and consult his, her or its own advisors as to the appropriateness and desirability of an investment in the Company and as to business, legal, tax and related matters concerning an investment in the company.

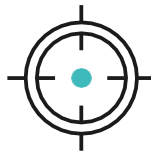
An investment in the Company shall be allowed only to such number and category of investors in accordance with applicable laws and regulations and pursuant to a predetermined process. Accordingly, detailed information in connection with the investment shall be revealed and delivered only to a limited number of qualifying investors as provided by law.

LIMACA'S PRECISION™

ENDOSCOPIC ULTRASOUND GUIDED (EUS) BIOPSY GAME CHANGER



IMPROVES DIAGNOSIS AND PROGNOSIS WHILE ADVANCING PATIENT-SPECIFIC TREATMENTS



Improves diagnostic accuracy



Obtains larger samples with higher quality core tissue



Enables procedure with 1/10th number of stabs



Automated, electro-mechanical revolving needle

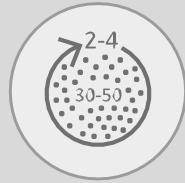
PRECISION™: A LEAP IN EUS BIOPSY

Standard of Care

Manual
User Dependent



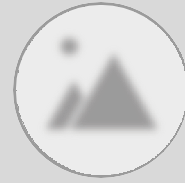
2-4 Passes with
30-50 Stabs



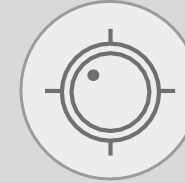
Time
Consuming



Poor Echo
Visualization



Imprecise



Poor Quality
Insufficient Samples

Precision by Limaca



Automated
Not User
Dependent



One Pass with
2-3 Stabs only



Shorter
Procedure



Excellent Echo
Visualization






Precise

Excellent Quality
Meets All
Diagnostic
Testing
Requirements



Over \$1 BILLION MARKET OPPORTUNITY FOR LIMACA'S PRECISION EUS BIOPSY PLATFORM

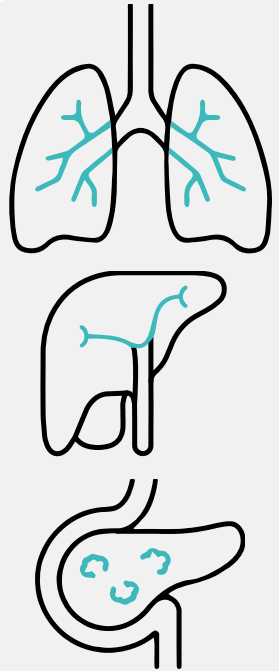
MARKET	# OF RELEVANT PROCEDURES
 Pancreatic	850,000
 Liver	225,000
 Lung	200,000
TOTAL	1.275 million

Sources:

EUS Needles Market - Global Industry Analysis and Forecast, 2017 to 2025 by Transparency Market Research (TMR)

Global Liver Biopsy System Market 2020 to 2026 by 2020 Global Info Research (GIR)

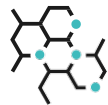
CANCER TREATMENT REQUIRES PRECISION MEDICINE



Precision Treatment:
Matches patient with
best available treatment

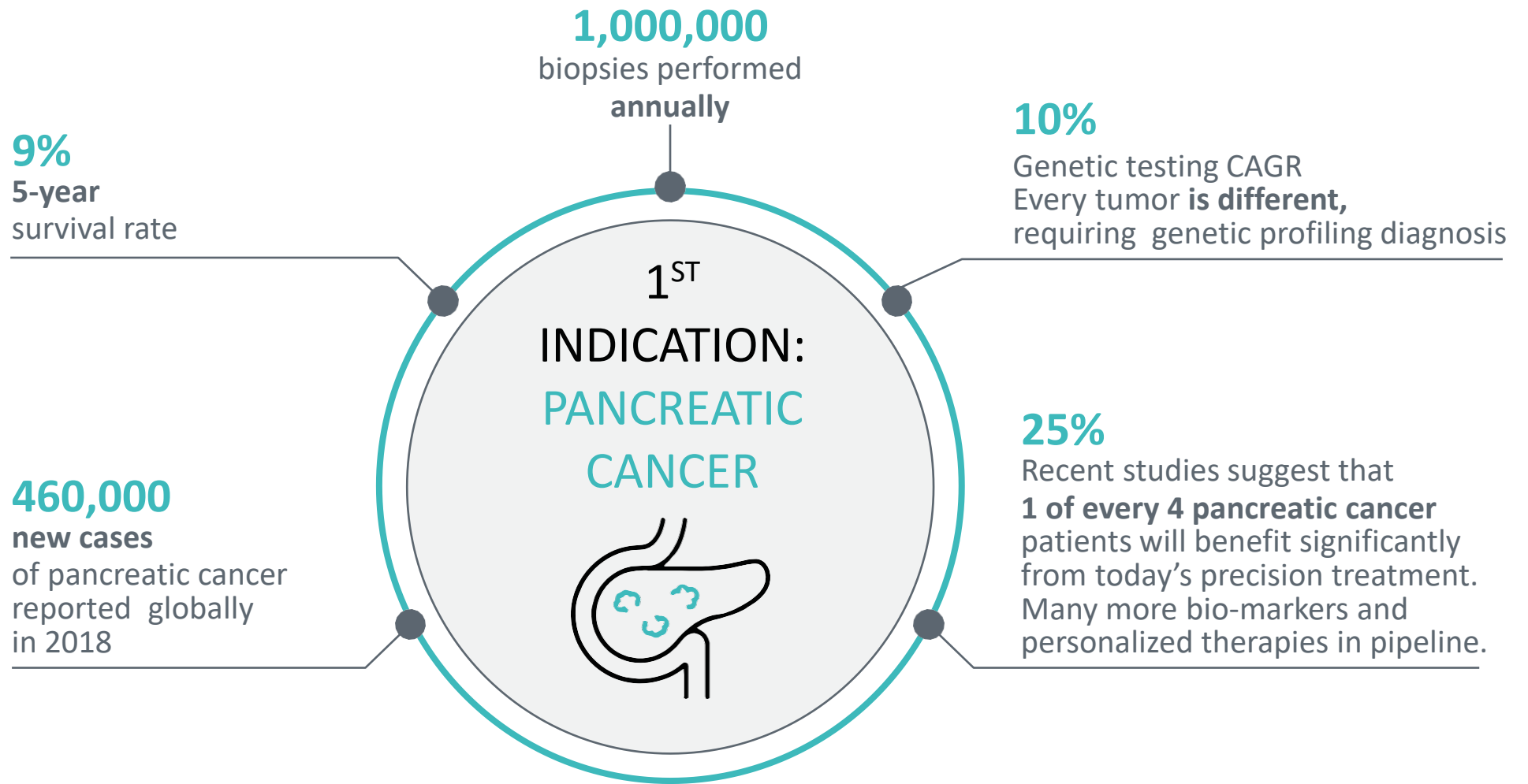


Genetic Profiling:
Analyzes cancer DNA to
define the genomic defect



**Genetic Profiling requires
high quality tissue sample**

EVOLVING REQUIREMENTS OF PRECISION MEDICINE
REQUIRES SIGNIFICANT IMPROVEMENTS
IN ENDOSCOPIC ULTRASOUND GUIDED BIOPSY



PANCREATIC CANCER SAMPLES ARE INADEQUATE FOR GENETIC PROFILING WITH ~50% SUCCESS RATE

FIRST-IN-HUMAN CLINICAL STUDY



IYAD KHAMAYSI MD

Using Limaca's Precision
in first-in-human trial at
RAMBAM Medical Centre,
Haifa

- Enrolling in two leading centers in israel

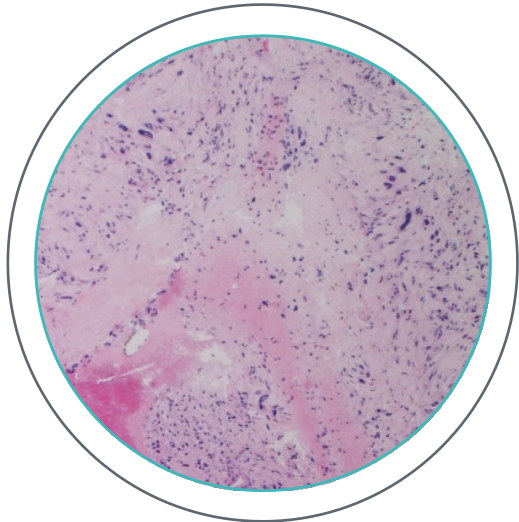
- Comparing Precision to existing manual EUS biopsy device

- To date: **10 of 32 patients** enrolled

- Safety & usability is excellent with **10X fewer stabs**. **Precision acquired large intact white cores** in comparison to mainly diced bloody biopsy samples with existing manual EUS biopsy devices

- **Next stage:** validate superiority for genetic profiling

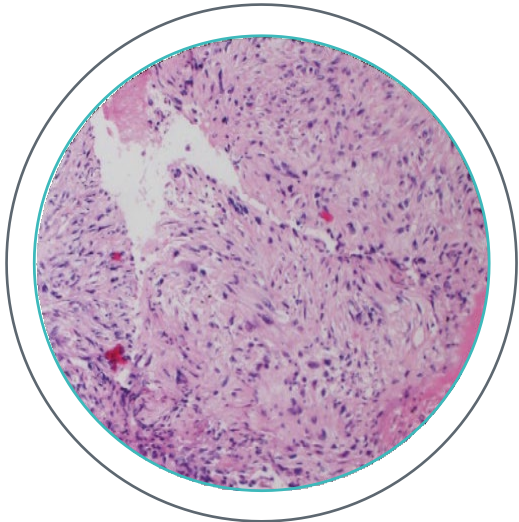
HISTOPATHOLOGY **QUALITY** RESULTS



SharkCore
10X more stabs



Non-structural, diced tissue
Adequate for cytology at the cellular level only



Precision Sample acquired
with only three stabs



Contiguous and intact sample
Adequate for cytology, histopathology and genetic profiling

REGULATORY AND IP



REGULATORY

FDA Class II,
510(k) pathway,
**no clinical
study required**
(confirmed by FDA)

CE Class IIa,
submission will
follow clinical study

**Reimbursement
codes** in place



Endoscopic Biopsy Device:
National phase

Tissue Penetrator:
Provisional application

EXPERIENCED TEAM



IYAD KHAMAYSI MD
FOUNDER & MED. DIRECTOR

Director, Invasive Endoscopy Unit, Department of Gastroenterology and Hepatology, Rambam Health Care, Israel; Clinical Assistant Professor, Faculty of Medicine, Technion Institute of Technology; research expertise in clinical and experimental endoscopy, pancreatic cancer, experimental models of pancreatitis and rheology of pancreatic cysts.



ASSAF KLEIN
CEO

20 years' experience in medical device companies; managerial and R&D positions in the fields of gastroenterology spine and cardiovascular; projects include implantable devices and delivery systems; former CEO, MediValve; MBA, Bar-Ilan University; B.Sc., mechanical engineering, Technion Institute of Technology, Israel.



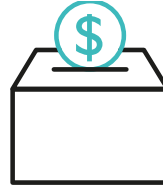
CARL RICKENBAUGH
CHAIRMAN OF THE BOARD

President, First Keel Consulting; current board member Paragonix Technologies; former M&A Head Bard Peripheral Vascular & Biopsy (13 years); and M&A Head at EQT Private Equity Company Clinical Innovations (successfully exited to Patricia AB company Laborie Medical in 2020); leadership in sales, marketing and product development at Abbott Laboratories (13 years).



Precision's impact on endoscopic biopsy will play out similarly to what was seen in the past decade with breast biopsy procedures shifting from basic manual cutting tools toward electromechanical devices specifically tailored to optimize biopsy

MILESTONES AND INVESTMENT



SAFE
Completed

Round A

- Clinical Validation
- Production Scale-Up
- FDA 510(k) Clearance

- Post Marketing Clinical Studies
- ISO and CE Approvals
- Commercialization
- Second Product- Lung



THE NEXT GENERATION
IN ENDOSCOPIC ULTRASOUND GUIDED BIOPSY

BETTER BIOPSIES FOR
ENHANCED PRECISION MEDICINE

 ASSAF@LIMACA-MEDICAL.COM